

An aerial photograph of a winding asphalt road that curves through a dense, lush green forest. Several cars are visible on the road, including a white car, a blue car, and a white van. The road has white dashed lines for lane markings. The overall scene is captured from a high angle, looking down on the road and the surrounding trees.

www.upschacks.com

DAILY NEWS DECODE

12.11.21

What is Norovirus disease, reported among 13 students in Kerala's Wayanad?



www.upschacks.com

- Norovirus, an animal-borne disease transmitted through contaminated water and food, was diagnosed in 13 students in Kerala's Wayanad.
- The Norovirus causes gastrointestinal illness, which causes symptoms such as severe vomiting, diarrhoea, abdominal pain, and nausea.
- The virus is easily transmitted through close contact with the infected person and is spread through their excrement and vomit.

Who is Alok Sharma, Agra-born UK minister who presided over COP26 conference?



- Born in Agra in 1967, 54-year-old Alok Sharma was appointed as full-time President for COP26 in January 2021.
- Sharma is known to have taken oath as an MP over the Bhagavad Gita.
- Prior to entering politics, Sharma qualified as a chartered accountant and has also worked for 16 years in the banking sector.

Longest partial lunar eclipse in 580 yrs to occur on Nov 19, to be visible from 2 states



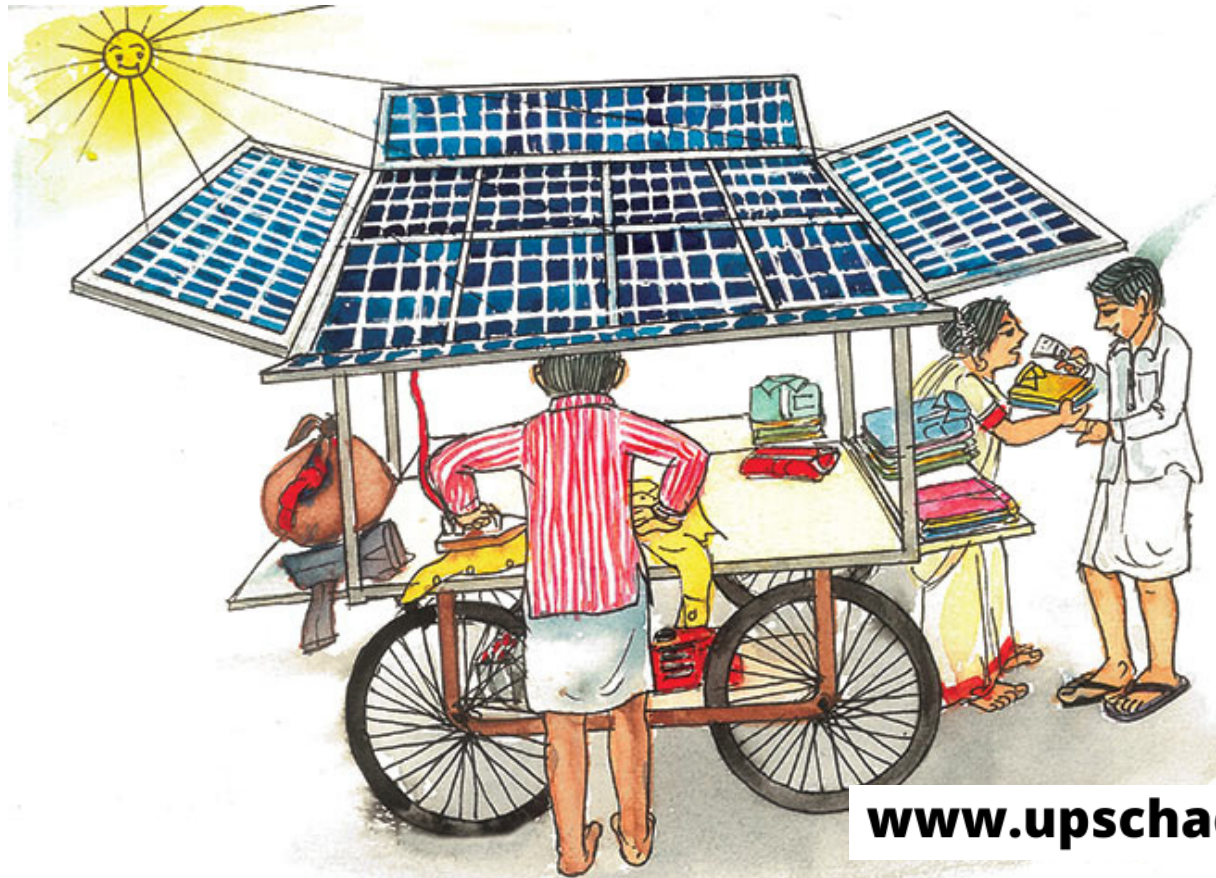
- A partial lunar eclipse will occur on November 19 and will be visible from extreme north-eastern parts of Arunachal Pradesh and Assam.
- It'll begin at 12 hours 48 minutes IST and end at 16 hours 17 minutes IST.
- It'll be the longest partial lunar eclipse in 580 years, said Dr Debiprosad Duari, Director, Research & Academic at MP Birla Planetarium.

ONAKE OBAVVA



- The Prime Minister Narendra Modi bowed to the great Kannada warrior woman, Onake Obavva on the special occasion of her Jayanti.
- Onake Obavva was a brave hindu woman who fought the forces of Hyder Ali single-handedly with a pestle (Onake) in the kingdom of Chitradurga of Karnataka.
- Her husband was a guard of a watchtower in the rocky fort of Chitradurga.
- In the state of Karnataka, she is celebrated along with Abbakka Rani, Keladi Chennamma and Kittur Chennamma, as the foremost women warriors and patriots.
- She belonged to the Holayas (Chalavadi) community.

SOLAR IRONING CART



- Miss Vinisha Umashankar, a 15-year-old girl from Tamil Nadu, who was recognized Earth Day Network Rising Star 2021 (USA) for her idea of 'Solar Ironing Cart', has exhorted the world to move towards clean energy during the recently concluded COP 26.
- Her mobile ironing cart, which uses solar panels to power a steam iron box is now an inspiration for the world.
- The prototype of Vinisha's mobile ironing cart which uses solar panels to power a steam iron box has been developed by National Innovation Foundation (NIF) - India in the year 2019.

- **A key benefit of the solar ironing cart is that it eliminates the need for coal for ironing bringing about a welcome shift towards clean energy.**
- **End users can move around and offer services at doorstep for increasing their daily earning.**
- **The ironing cart can also be fitted with a coin-operated GSM PCO, USB charging points and mobile recharging which can fetch extra income.**
- **The device can also be powered by pre-charged batteries, electricity or diesel-powered generator in the absence of sunlight.**

www.upschacks.com

www.upschacks.com

EARTH'S FIRST LANDMASS



- A new study has challenged the widely accepted view that the continents rose from the oceans about 2.5 billion years ago.
- It suggests this happened 700 million years earlier — about 3.2 billion years ago — and that the earliest continental landmass to emerge may have been Jharkhand's Singhbhum region.
- The study, by researchers from India, Australia and the US, has been published in the journal PNAS.
- Scientists have found sandstones in Singhbhum with geological signatures of ancient river channels, tidal plains and beaches over 3.2 billion years old, representing the earliest crust exposed to air.
- The researchers studied the granites that form the continental crust of Singhbhum region.